

Test 7

LISTENING

SECTION 1 Questions 1–10

Complete the notes below.

Write **ONE WORD ONLY** for each answer.

PUBLIC LIBRARY	
<i>Example</i>	The library re-opened lastmonth.....
The library now has	<ul style="list-style-type: none">• a seating area with magazines• an expanded section for books on 1• a new section on local 2• a community room for meetings (also possible to 3 there)• a new section of books for 4
For younger children	<ul style="list-style-type: none">• the next Science Club meeting: experiments using things from your 5• Reading Challenge: read six books during the holidays
For adults	<ul style="list-style-type: none">• this Friday: a local author talks about a novel based on a real 6• IT support is available on Tuesdays – no 7 is necessary• free check of blood 8 and cholesterol levels (over 60s only)
Other information	<ul style="list-style-type: none">• the library shop sells wall-charts, cards and 9• evenings and weekends: free 10 is available

SECTION 2 Questions 11–20

Questions 11 and 12

Choose **TWO** letters, **A–E**.

Which **TWO** age groups are taking increasing numbers of holidays with BC Travel?

- A** 16–30 years
- B** 31–42 years
- C** 43–54 years
- D** 55–64 years
- E** over 65 years

Questions 13 and 14

Choose **TWO** letters, **A–E**.

Which **TWO** are the main reasons given for the popularity of activity holidays?

- A** Clients make new friends.
- B** Clients learn a useful skill.
- C** Clients learn about a different culture.
- D** Clients are excited by the risk involved.
- E** Clients find them good value for money.

Questions 15–17

Choose the correct letter, **A**, **B** or **C**.

15 How does BC Travel plan to expand the painting holidays?

- A** by adding to the number of locations
- B** by increasing the range of levels
- C** by employing more teachers

16 Why are BC Travel's cooking holidays unusual?

- A** They only use organic foods.
- B** They have an international focus.
- C** They mainly involve vegetarian dishes.

17 What does the speaker say about the photography holidays?

- A** Clients receive individual tuition.
- B** The tutors are also trained guides.
- C** Advice is given on selling photographs.

Questions 18–20

Complete the table below.

Write **ONE WORD ONLY** for each answer.

Fitness Holidays

Location	Main focus	Other comments
Ireland and Italy	general fitness	<ul style="list-style-type: none"> • personally designed programme • also reduces 18
Greece	19 control	<ul style="list-style-type: none"> • includes exercise on the beach
Morocco	mountain biking	<ul style="list-style-type: none"> • wide variety of levels • one holiday that is specially designed for 20

SECTION 3 Questions 21–30

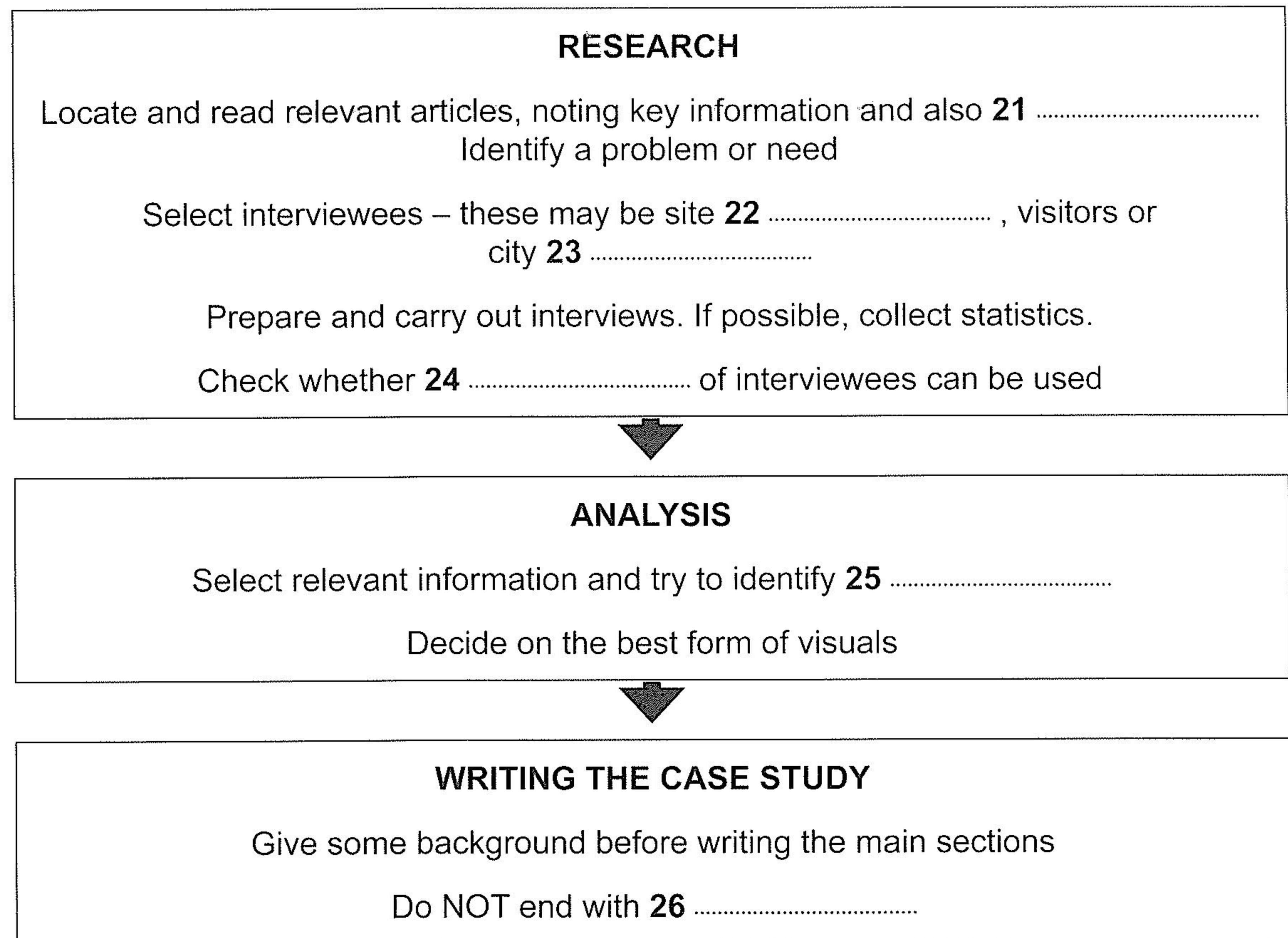
Questions 21–26

Complete the flow-chart below.

Choose **SIX** answers from the box and write the correct letter, **A–H**, next to Questions 21–26.

A patterns	B names	C sources	D questions
E employees	F solutions	G headings	H officials

STAGES IN DOING A TOURISM CASE STUDY



Questions 27–30

Choose the correct letter, **A**, **B** or **C**.

The Horton Castle site

- 27** Natalie and Dave agree one reason why so few people visit Horton Castle is that
- A** the publicity is poor.
 - B** it is difficult to get to.
 - C** there is little there of interest.
- 28** Natalie and Dave agree that the greatest problem with a visitor centre could be
- A** covering the investment costs.
 - B** finding a big enough space for it.
 - C** dealing with planning restrictions.
- 29** What does Dave say about conditions in the town of Horton?
- A** There is a lot of unemployment.
 - B** There are few people of working age.
 - C** There are opportunities for skilled workers.
- 30** According to Natalie, one way to prevent damage to the castle site would be to
- A** insist visitors have a guide.
 - B** make visitors keep to the paths.
 - C** limit visitor numbers.

SECTION 4 Questions 31–40

Complete the notes below.

Write **ONE WORD ONLY** for each answer.

The effects of environmental change on birds

Mercury (Hg)

- Highly toxic
- Released into the atmosphere from coal
- In water it may be consumed by fish
- It has also recently been found to affect birds which feed on **31**

Research on effects of mercury on birds

- Claire Varian-Ramos is investigating:
 - the effects on birds' **32** or mental processes, e.g. memory
 - the effects on bird song (usually learned from a bird's **33**)
- Findings:
 - songs learned by birds exposed to mercury are less **34**
 - this may have a negative effect on birds' **35**
- Lab-based studies:
 - allow more **36** for the experimenter

Implications for humans

- Migrating birds such as **37** containing mercury may be eaten by humans
- Mercury also causes problems in learning **38**
- Mercury in a mother's body from **39** may affect the unborn child
- New regulations for mercury emissions will affect everyone's energy **40**